



**INTERNATIONAL  
GEMOLOGICAL  
INSTITUTE**

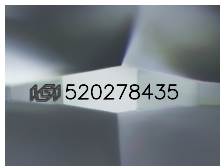
520278435



August 5, 2022  
IGI Report Number 520278435  
NATURAL DIAMOND  
SQUARE CUSHION MODIFIED  
BRILLIANT  
4.99 x 4.96 x 3.45 mm  
Carat Weight 0.76 CARAT  
Color Grade H  
Clarity Grade SI 2  
Pol - Sym VERY GOOD  
Proportions VERY GOOD  
Fluorescence NONE  
Inscription(s) IGI 520278435

**DIAMOND REPORT**

**ELECTRONIC COPY**



Sample Image Used

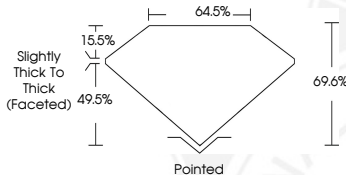
August 5, 2022  
IGI Report Number 520278435  
Description NATURAL DIAMOND  
Shape and Cutting Style SQUARE CUSHION MODIFIED BRILLIANT  
Measurements 4.99 x 4.96 x 3.45 mm

**GRADING RESULTS**

Carat Weight 0.76 CARAT  
Color Grade H  
Clarity Grade SI 2

**ADDITIONAL GRADING INFORMATION**

Polish - Symmetry VERY GOOD  
Proportions VERY GOOD  
Fluorescence NONE  
Identification Features CRYSTAL, CLOUD  
Inscription(s) IGI 520278435



**COLOR**

| D - F     | G - J          | K - M           | N - R            | S - Z       | FANCY |
|-----------|----------------|-----------------|------------------|-------------|-------|
| Colorless | Near Colorless | Slightly Tinted | Very Light Color | Light Color |       |

**CLARITY**

| IF                  | VS <sup>1-2</sup>           | VS <sup>1-2</sup>      | SI <sup>1-2</sup> | I <sup>1-2</sup> |
|---------------------|-----------------------------|------------------------|-------------------|------------------|
| Internally Flawless | Very Very Slightly Included | Very Slightly Included | Slightly Included | Included         |



August 5, 2022  
IGI Report Number 520278435  
NATURAL DIAMOND  
SQUARE CUSHION MODIFIED  
BRILLIANT  
4.99 x 4.96 x 3.45 mm  
Carat Weight 0.76 CARAT  
Color Grade H  
Clarity Grade SI 2  
Pol - Sym VERY GOOD  
Proportions VERY GOOD  
Fluorescence NONE  
Inscription(s) IGI 520278435



THIS DOCUMENT WAS PRODUCED WITH THE FOLLOWING SECURITY MEASURES: SPECIAL DOCUMENT PAPER, INK SCREENS, WATERMARK, BACKGROUND DESIGN, HOLOGRAM AND OTHER SECURITY FEATURES NOT LISTED AND DO EXCEED DOCUMENT SECURITY INDUSTRY GUIDELINES.

© IGI 2020, International Gemological Institute

FD - 10 20