



625485092

DIAMOND REPORT ELECTRONIC COPY



April 16, 2024
IGI Report Number 625485092
Description NATURAL DIAMOND
Shape and Cutting Style ROUND BRILLIANT
Measurements 6.11 - 6.17 x 4.06 mm

GRADING RESULTS

Carat Weight 1.01 CARAT
Color Grade E
Clarity Grade SI 1
Cut Grade GOOD

April 16, 2024
IGI Report Number 625485092
Description NATURAL DIAMOND
Shape and Cutting Style ROUND BRILLIANT
Measurements 6.11 - 6.17 x 4.06 mm

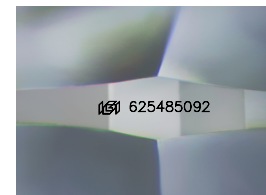
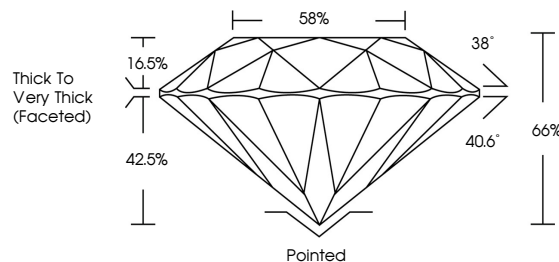
GRADING RESULTS

Carat Weight 1.01 CARAT
Color Grade E
Clarity Grade SI 1
Cut Grade GOOD

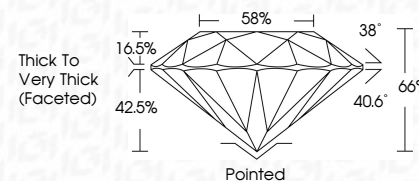
ADDITIONAL GRADING INFORMATION

Polish EXCELLENT
Symmetry EXCELLENT
Fluorescence NONE
Inscription(s) IGI 625485092

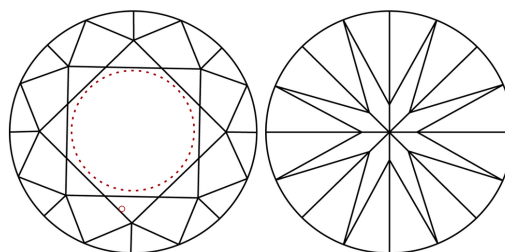
PROPORTIONS



Sample Image Used



CLARITY CHARACTERISTICS



KEY TO SYMBOLS

Red symbols indicate internal characteristics.
Green symbols indicate external characteristics.

COLOR

Table with columns for color grades: D-F, G-J, K-M, N-R, S-Z, FANCY. Descriptions: Colorless, Near Colorless, Slightly Tinted, Very Light Color, Light Color.

CLARITY

Table with columns for clarity grades: IF, WVS 1-2, VS 1-2, SI 1-2, I 1-3. Descriptions: Internally Flawless, Very Very Slightly Included, Very Slightly Included, Slightly Included, Included.

ADDITIONAL GRADING INFORMATION

Polish EXCELLENT
Symmetry EXCELLENT
Fluorescence NONE
Inscription(s) IGI 625485092



IGI

April 16, 2024
IGI Report No. 625485092
NATURAL DIAMOND
ROUND BRILLIANT
6.11 - 6.17 x 4.06 mm
Carat Weight 1.01 CARAT
Color Grade E
Clarity Grade SI 1
Cut Grade GOOD
Depth 65%
Table 65%
Girdle Thick To Very Thick (recessed)
Culet Pointed
Polish EXCELLENT
Symmetry EXCELLENT
Fluorescence NONE
Inscription(s) IGI 625485092